

INVITATION TO BID
JEFFERSON PARISH SHERIFF'S OFFICE
1233 WESTBANK EXPRESSWAY, ROOM 411,
HARVEY, LA. 70058

Bids/Request for proposals will be received in the purchasing division until **10:00a.m., Wednesday April 8, 2026.**

The bid will be publicly opened at **10:00a.m., Wednesday April 8, 2026.**

NOTE: Only bids written in ink or typewritten, and properly signed by a member of the firm or authorized representative, will be accepted.

Pencil and/or photographic copies of signatures disqualify bid.

DESCRIPTION OF ARTICLES	
<p>THE JEFFERSON PARISH SHERIFF'S OFFICE IS NOW ACCEPTING BIDS ON:</p> <p>MEN/WOMEN POLO SHIRTS (Vertx Action Polo, or equal) (VTX4010P/VTX4000P)</p> <p>SEE ATTACHED FOR SPECIFICATIONS & QUANTITIES</p> <p>QUANTITIES LISTED ARE ESTIMATES ONLY</p> <p>Contract valid for (1) year from date of award letter unless otherwise specified.</p>	

Delivery date must be indicated _____

Starting time (In days) _____

Must be indicated for construction work.

Completion time (In days) _____

(Unless specified your bid may not be considered)

SAM.gov # Tax ID#

Firm

Signature Title

Print or Type Name

Address Telephone

City State Zip

Email Address

ITEM #	QUANTITY	DESCRIPTION	UNIT PRICE
1	50	WOMEN-X SMALL	
2	50	WOMEN-SMALL	
3	50	WOMEN-MEDIUM	
4	50	WOMEN-LARGE	
5	50	WOMEN-X LARGE	
6	10	WOMEN-2-X LARGE	
7	10	WOMEN-3-X LARGE	
8	10	WOMEN-4-X LARGE	
9	10	WOMEN-5-X LARGE	
ITEM #	QUANTITY	DESCRIPTION	UNIT PRICE
1	60	MEN-SMALL	
2	100	MEN-MEDIUM	
3	100	MEN-LARGE	
4	50	MEN-X LARGE	
5	60	MEN-2-X LARGE	
6	60	MEN-3-X LARGE	
7	60	MEN-4-X LARGE	
8	20	MEN-5-X LARGE	

**NOTE: Must include all colors available in the styles listed above.
Please indicate the brand you are bidding if other than Vertx**

POLO SPECIFICATIONS
VERTX Action Polo with coldblack®

FABRICS:

100% Polyester, Full Dull yarn, 6.5 oz Double Pique Weave

Finish:

coldblack® technology by Schoeller Textiles
Antimicrobial Finish
Moisture Wicking Finish

Color:

Tan, Black, Grey, Light Grey, Navy, Red, Spruce Green, White

STYLE:

The polo shall have a raglan sleeve design with gusseted inserts and two compartment pencil pocket on the left sleeve, side vents, front placket with 2 dull finish bone buttons, microphone/sunglass loop, with self-fabric collar and sleeve hem.



COLLAR:

Collar is to be made out of self-fabric, lined with fusing and shall have collar stays. The collar points shall measure 2 ½"

GUSSET:

There shall be a 2 ½" gusset that joins the side seam. The gusset is designed to improve mobility and fit.

BUTTONS:

Dyed to match, dull finish bone 4 hole button, 20 ligne.

FRONT:

Approximate 5 ½" long x 1 ½" wide" placket, 2 buttons with fusible interlining. Placket shall have a microphone/sunglass loop located at base of placket measuring approximately 3/8" long x 1 ½" wide.

SLEEVES:

Shall be short sleeve style with 1" self-fabric cuff. The sleeve shall measure 15 5/8" from collar seam to sleeve hem on a size Medium and will grad accordingly.

PENCIL POCKET:

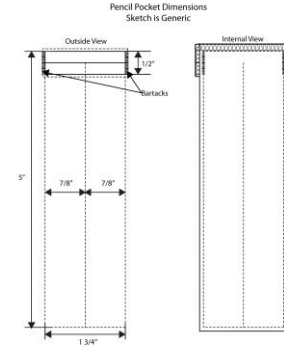
Pencil pocket dimensions shall finish 1 3/4" W x 5" L. Seam at center to separate into two 7/8" wide pen/pencil pockets. Welt pocket opening with 1/2" Bartacks at each side.

HEM:

There shall be a 1" hem with 2 1/2" long side vent located at hem on right and left side.

THREAD:

All sewing threads to be colorfast polyester wrap dyed to match.



MANUFACTURERS NECK LABELS:

Heat seal yoke label with manufacturer's trade name and size, country of origin, content and care instructions, located in center back neck.

CONTENT CARE LABEL:

To be sewn into side seam on wearer's left side. Label will show Care Instruction.

SIZE SCALE:

XS – XL
2XL and 3XL comes in Navy only

STYLE NUMBERS:

VTX4010P

Color:

Tan, Black, Grey, Light Grey, Navy, Red, Spruce Green, White

POLO SPECIFICATIONS
VERTX Action Polo with coldblack®

FABRICS:

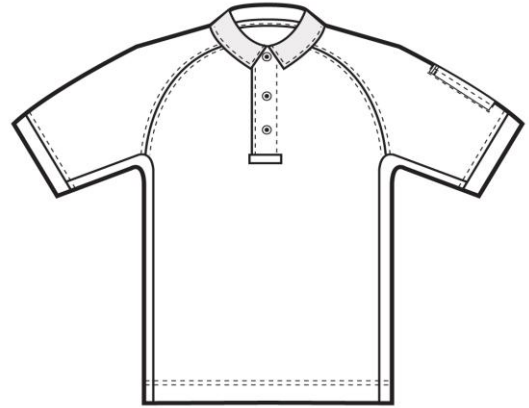
100% Polyester, Full Dull yarn, 6.5 oz Double Pique Weave

Finish:

coldblack® technology by Schoeller Textiles
Antimicrobial Finish
Moisture Wicking Finish

Color:

Tan, Black, Grey, Light Grey, Navy, Red, Spruce Green, White



STYLE:

The polo shall have a raglan sleeve design with gusseted inserts and two compartment pencil pocket on the left sleeve, side vents, front placket with 3 dull finish bone buttons, microphone/sunglass loop, with self-fabric collar and sleeve hem.

COLLAR:

Collar is to be made out of self-fabric, lined with fusing and shall have collar stays. The collar points shall measure 2 3/4"

GUSSET:

There shall be a 3" gusset that joins the side seam. The gusset is designed to improve mobility and fit.

BUTTONS:

Dyed to match, dull finish bone 4 hole button, 20 ligne.

FRONT:

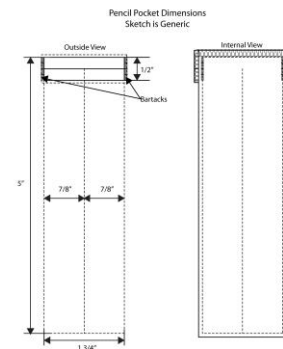
Approximate 6 1/2" long x 1 1/2" wide" placket, 3 buttons with fusible interlining. Placket shall have a microphone/sunglass loop located at base of placket measuring approximately 3/8" long x 1 1/2" wide.

SLEEVES:

Shall be short sleeve style with 1" self-fabric cuff. The sleeve shall measure 19" from collar seam to sleeve hem on a size Medium and will grad accordingly.

PENCIL POCKET:

Pencil pocket dimensions shall finish 1 3/4" W x 5" L. Seam at center to separate into two 7/8" wide pen/pencil pockets. Welt pocket opening with 1/2" Bartacks at each side.



HEM:

There shall be a 1" hem with 2 1/2" long side vent located at hem on right and left side.

THREAD:

All sewing threads to be colorfast polyester wrap dyed to match.

MANUFACTURERS NECK LABELS:

Heat seal yoke label with manufacturer's trade name and size, country of origin, content and care instructions, located in center back neck.

CONTENT CARE LABEL:

To be sewn into side seam on wearer's left side. Label will show Care Instruction.

SIZE SCALE:

XS - 4XL

5XL comes in Light Grey and Navy only

STYLE NUMBERS:

VTX4000P

Color:

Tan, Black, Grey, Light Grey, Navy, Red, Spruce Green, White